

# Product Guide



**JUNAIR**  
SPRAYBOOTHS

[www.junair.co.uk](http://www.junair.co.uk)

# Index



Bodyshop  
Equipment



Smart/Cosmetic  
/Rapid Repair



## What we do

Junair are the UK's leading spraybooth and paint finishing manufacturer. Our innovative designs and commitment to building high quality, technically advanced refinishing equipment allows us to tailor a solution that helps you work smarter, save time and money and achieve outstanding results, now and in the future.

## Why choose Junair Spraybooths?

With Junair you can always expect a friendly consultative approach, from initial design and layout through to maintaining the equipment. We undertake each project uniquely, managing the whole process from start to finish whether it is an installation of a single spraybooth or a complete bodyshop transformation project. We have a specialist contracts team who make certain each project is completed to a high standard, on time, within budget and to the agreed specification.

Junair invest heavily in training and development to ensure our technology and equipment is the most advanced and energy efficient on the market. To further support our products, we offer on-site training packages tailored to suit your individual needs.

## SPRAYBOOTH OVENS

Commercial Vehicle Spraybooth Oven	6-7	●
CV Access Platforms	8-9	●
1 Series Spraybooth Oven	10-11	●●
3 Series Spraybooth Oven	12-13	●
5 Series Spraybooth Oven	14-15	●
Duo Spraybooth Oven	16-17	●
EVAC and LEVAC Spraybooth Floor Options	18-19	●●
Energy Saving Technology	20	●●
QADs Auxiliary Air Movement System	20	●●
Variable Airflow Technology	21	●●
Fuel Saver Mode	22	●●
Spraybooth Optional Equipment	23	●●
Mist Clearance Indicator	23	●●
Side Loading System	23	●●
Fire Alarm Strobe	23	●●
Emergency Lighting	23	●●
Mode Indicator Lights	23	●●
Side and Corner Door Access	23	●●
Compressed Air Filter Regulator	24	●●
Recessed Cabinet For Filter Regulator	24	●●
Spraybooth LED Lighting	24	●●
Viewing Windows	25	●●
Spraybooth Vehicle Lift	25	●●
External Spraybooth Ovens	25	●●
Spraybooth Rapid Repair Option	26	●●
Spraybooth Control Panel Options	27	●●
Aluminium and Non-Steel Repair Bay	28	●●
Paint Mixing and Gun Cleaning Rooms	28	●●
Mixing Benches	29	●●
Ventilated Mixing Bench	29	●●
Gun Cleaners	29	●●
Heater	29	●●
Gridded Floor	29	●●
Stainless Steel Lining	29	●●

## SMART, COSMETIC AND RAPID REPAIR EQUIPMENT

SmartCabin	30	●●
Slim Line Infra-Red Curing Unit	31	●●
SmartAir	31	●●
SmartAir IR	31	●●

## ALLOY WHEEL REPAIR EQUIPMENT

WheelCabin	32	●●
WheelBlast	32	●●
AquaBlast	32	●●
Ventilated Parts Preparation Bench	33	●●
Loading Bench	33	●●
Tyre Changer and Bead Breaker	33	●●
WheelWasher	33	●●
WheelBake	34	●●
WheelRack	34	●●
WheelSmart	34	●●
SmartStation	34	●●

## MECHANICAL AND ELECTRICAL SERVICES

Compressed Air	35	●●
Builders Work	35	●●
Services Tray	35	●●
Natural Gas and LPG		
Distribution Pipe-Work	35	●●
Electrical Installation	35	●●
Bodyshop Lighting	36	●●
Dust Extraction Systems	36	●●
Compressors	37	●●
Partitioning	37	●●
Heating	37	●●
Floor Painting	37	●●
Vehicle Lifts	38	●●
Jigs and Wheel Alignment Systems	38	●●

## SPRAYBOOTH SERVICE AND MAINTENANCE

Spraybooth Legislation Testing	39	●●
Spraybooth Filters	39	●●
Spraybooth Spare Parts	39	●●

# Spraybooth Ovens

The Junair name is synonymous with innovation in spraybooth development, providing solutions that deliver energy-savings, higher productivity, enhanced performance and, ultimately, increased profitability for our customers. The inherent design flexibility and in-house British manufacture allows any booth to be tailored to suit individual dimensions and performance requirements. Features across the range include:

## High quality engineering

- Reliable and durable construction
- Designed for ease of maintenance
- All Junair spraybooth ovens are designed for use with approved compliant coatings and comply with the latest Environmental, Health & Safety and COSHH legislation

## White internal and external double skin insulated construction

- Energy saving
- Low noise levels
- Superb lighting levels
- Attractive aesthetic finish
- Anti-corrosion coating to extend the product life

## Fully glazed doors

- Wide opening for easy loading / unloading
- Excellent vision into and out of the cabin
- Robust adjustable hinges

## Energy saving, high output and high frequency lighting

- Flicker free start extends tube life
- Brilliant colour rendition
- Low maintenance cost

## Direct drive, backward curved centrifugal fans

- No drive belt costs or drive belt failures
- Efficient, powerful and reliable
- Large blade design for easy cleaning and maintenance
- Reduces noise pollution

## Fully modulating natural gas or LPG burner

- Rapid controlled temperature rise
- Extremely close temperature control
- Low running cost
- Quality components for improved performance and reliability
- Excellent combustion means no fume smells or paint problems
- Oil fired option available

## National engineering teams for after-sales support

- 3 year warranty subject to standard terms and conditions
- Economical maintenance
- Legislation compliance service

LED upgrade option with a  
**5 year warranty**





# Commercial Vehicle Spraybooth Oven

Junair's CV spraybooths come with a wide range of pioneering features to ensure a consistently brilliant finish, greatly reduced cycle times and huge savings in energy consumption and running costs.

A bright, white polyester paint finish on the robust galvanised steel substrate provides excellent corrosion resistance and a lighter working environment for operatives. Large area ceiling input filters provide superb downdraught air movement, allowing over-spray to be dispersed faster and mist clearance times to be reduced. Highly efficient extraction is assured, either through the floor via a pit or extraction chests at the sides or rear of the cabin.

The air handling plant can be positioned on the floor next to the booth or roof-mounted to maximise your Bodyshops working area. Burner options include energy efficient, direct gas firing - mains, LPG and indirect oil. Junair's purpose-designed lighting system, Ultralux, consistently achieves lighting levels of up to 1500 lux, even when measured low down in the booth. Junair can design and install a CV spraybooth that is tailored to suit your operation, both in terms of size and performance.

## Features



PIT, REAR OR SIDE CHEST EXTRACTION



EXTRA WIDTH AND HEIGHT FOR SPECIAL APPLICATIONS



ENERGY-EFFICIENT AIR HANDLING PLANT



CABIN DIVIDED FOR SPLIT OPERATION

## Options Include:

- Drive through spraybooths
- Split cabin with independent operation
- Pit, rear or side chest extraction
- Access platforms (more details on page 8)
- QADs auxiliary drying for faster flash off and bake times (useful for multi-colour finishes)
- Energy saving controls
- Power operated roller shutter doors or folding leaf doors
- LED lighting upgrade



# CV Access Platforms

Specifically designed for use in spraybooths and on paint lines, the Alfa-Lift platforms facilitate a faster, safer and easier means of masking, painting and inspecting commercial vehicles, machinery and equipment.

## Features



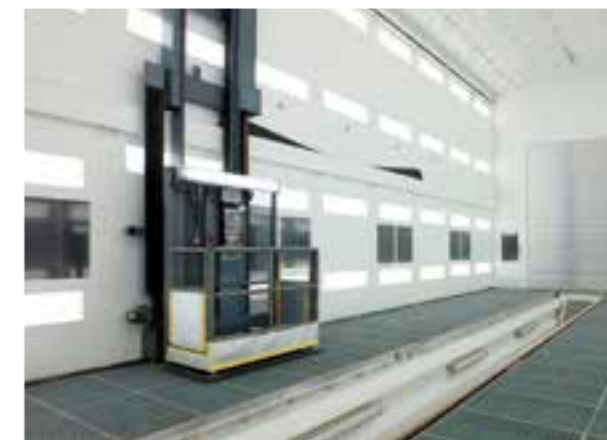
SAFETY RAILS



EASY TO USE CONTROLS



FULLY EXTENDED PLATFORMS



2 PERSON LIFT

### PNEUMATIC PLATFORMS

The Alfa-Lift pneumatic platform offers easy-to-use controls comprising of three levers allowing the operator to send the cage in all three directions. The controls are located in the platform cage which is designed to carry one person and equipment. Fixed rails, which allow the pneumatic platform to move laterally, ensure it does not come into contact with the floor.

There are 8 standard models to choose from in the Alfa-Lift pneumatic platforms range. For more specialised requirements, platforms can be designed and manufactured to suit individual specifications.

### HYDRAULIC PLATFORMS

Alfa-Lift hydraulic platforms offer the ideal solution for those wanting to paint large vehicles and components. With the ability to travel in three directions like their pneumatic counterparts, Alfa-Lift hydraulic platforms can extend further and higher without compromising stability or safety.

Designed to carry up to 2 spray technicians and their equipment, Alfa-Lift hydraulic platforms deliver the capacity and productivity needed by operators of larger spraybooths.

Using the control box and foot pedals the operator can easily direct the platform in the required direction, while several mechanisms are in place to enhance safety including the ability to come smoothly to a stop without sudden movements.

### SAFETY AND COMPLIANCE

The safety technology built-in as standard across the Alfa-Lift platforms range includes features to prevent the accidental opening of access doors, collisions with obstacles and the ground, the leaking and pinching of hoses and excess weight.

Hydraulic platforms also include other safety measures, such as two chains fitted as standard, so even if one should fail, the other chain will ensure that work can continue safely. Operator protection also includes safety harnesses which are secured to two anchoring points on the platform.



# 1 Series Spraybooth Oven

The Junair 1 Series spraybooth oven has been developed for customers who want an economical, low cost spraybooth oven, but also require a high quality construction, excellent performance and unrivalled reliability.

There are many features on this spraybooth that are normally associated with higher cost equipment. There is a compact roof mounted air handling plant option for installations where space saving is critical.

This is a semi downdraught spraybooth with rear extraction, **requiring no floor excavation.**

The 1 Series spraybooth can be designed and built to any size to accommodate vans, light commercial vehicles and special vehicles.

## Features



3 LEAF DOOR OPTION



EASY-CHANGE FILTERS



HEAVY-DUTY DOOR HINGES



USER-FRIENDLY CONTROLS



DIRECT DRIVE CENTRIFUGAL FAN



ENERGY-EFFICIENT AIR HANDLING PLANT

## Specifications

Air handling plant performance (m <sup>3</sup> /h)	12,000	20,000
Air changes per minute (standard empty cabin)	3.2	5.3
Extract and input high efficiency fan motors (kW)	3.0	5.5
Direct gas fired burner output (kW)	100	170
Spray cycle air temperature rise		25°C
Bake cycle air temperature (maximum)		100°C
Lighting – high frequency and energy efficient		1,000 lux
Faster process options		QADs auxiliary air movement
Energy saving options		Fuel Saver Mode, QADs, Variable Airflow
Door options	Sliding corner door suitable for restricted space and 3 or 4 leaf door sets for wide opening	
Warranty	3 year warranty package (standard terms apply)	



Picture shown includes the 3 leaf door option

# 3 Series Spraybooth Oven

The 3 Series is our mid-range spraybooth which can be designed and built to your individual requirements, offering enhanced features to increase the quality of your paint finish.

The quality of construction and component selection make this spraybooth top in its class. Fully glazed doors improve vision into and out of the cabin. The LEVAC floor, an option on the 3 Series spraybooth, delivers excellent downdraught performance on a fully extracted floor just 140mm high, **requiring no floor excavation.**

## Features



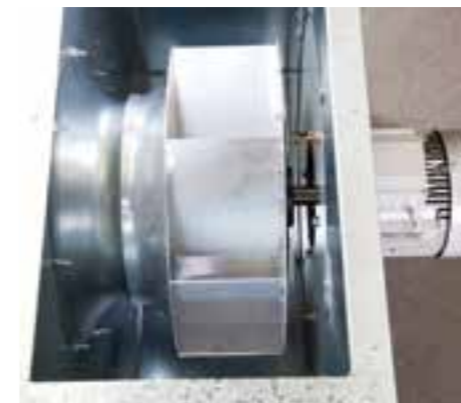
FULL WIDTH CEILING FILTERS



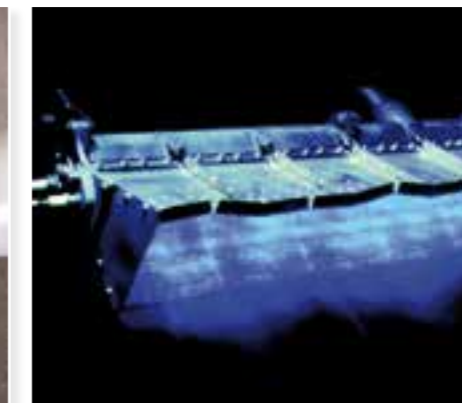
EXTENDED LENGTH SPRAYBOOTH



ENERGY-EFFICIENT AIR HANDLING PLANT



DIRECT DRIVE CENTRIFUGAL FAN



FULLY MODULATING DIRECT GAS FIRED BURNER



VEHICLE LIFT OPTION

## Specifications

Air handling plant performance (m <sup>3</sup> /h)	12,000	20,000	25,000
Air changes per minute (standard empty cabin)	3.0	4.95	6.2
Extract and input high efficiency fan motors (kW)	3.0	5.5	7.5
Direct gas fired burner output (kW)	100	170	212
Spray cycle air temperature rise	25°C		
Bake cycle air temperature (maximum)	100°C		
Lighting – high frequency and energy efficient	1,000 lux		
Faster process options	QADs auxiliary air movement		
Energy saving options	Fuel Saver Mode, QADs, Variable Airflow		
Floor options	Standard pit, EVAC or LEVAC (page 18)		
Door options	Sliding corner door suitable for restricted space and 3 or 4 leaf door sets for wide opening		
Warranty	3 year warranty package (standard terms apply)		



# 5 Series Spraybooth Oven

The 5 Series spraybooth oven is our flagship model. Combining state of the art technology with an outstanding build quality to offer the most advanced spraybooth on the market.

With energy saving and production enhancing equipment the 5 Series spraybooth oven delivers the highest quality paint finish at the lowest cost per unit.

Three leaf door set for wide opening and a LEVAC or EVAC fully extracted and balanced floor are incorporated into the 5 Series spraybooth oven as standard. In combination with the full width and full length plenum, the downdraught airflow through this cabin is second to none.

## Features



LOW PROFILE FLOOR - NO EXCAVATION REQUIRED



EXTERNAL OPTION



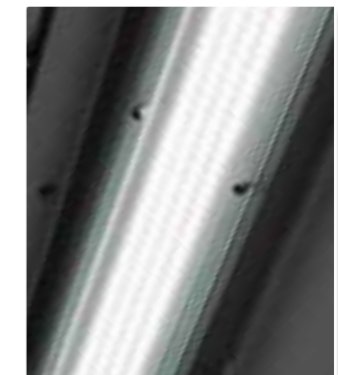
ENERGY-EFFICIENT AIR HANDLING PLANT



FOUR LEAF DOOR SET OPTION FOR A WIDER OPENING



TOUCH SCREEN CONTROLS



LED LIGHTING OPTION

## Specifications

Air handling plant performance (m <sup>3</sup> /h)	20,000	25,000	30,000	35,000
Air changes per minute (standard empty cabin)	4.0	5.0	6.0	7.0
Extract and input high efficiency fan motors (kW)	5.5	7.5	11.0	11.0
Direct gas fired burner output (kW)	170	212	255	300
Spray cycle air temperature rise				25°C
Bake cycle air temperature (maximum)				100°C
Lighting – high frequency and energy efficient				1,500 lux
Faster process times				QADs auxiliary air movement
Energy saving technology				Fuel Saver Mode, QADs, Variable Airflow
Floor options				Standard pit, EVAC or LEVAC (page 18)
Door options				4 leaf door sets for wide opening
LED lighting option				Upgrade to LED lighting
Warranty				3 year warranty package (standard terms apply)





# Duo Spraybooth Oven

The Junair Duo spraybooth oven has been developed to meet the increasing demand for additional priming facilities and 'fast track' work.

The Duo spraybooth has the option of a LEVAC floor (see page 18), pit or rear extraction. The double width cabin shares a central air handling plant making this unit very cost effective.

Two vehicles can be processed at the same time, sharing a common bake cycle which also dramatically reduces energy cost per unit.

Small top coat repairs can also be completed in the Duo spraybooth making it an extremely versatile addition for high throughput Bodyshops and 'fast track' work.

## Features



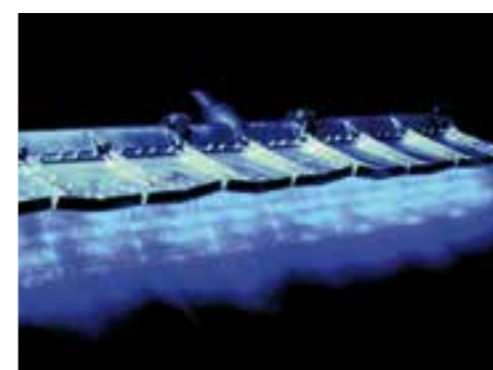
SUPERB ILLUMINATION



ENERGY-EFFICIENT AIR HANDLING PLANT



NO EXCAVATION REQUIRED



FULLY MODULATING DIRECT GAS FIRED BURNER



EASY-CHANGE FILTERS

## Specifications

Nominal Dimensions (mm)	7,000 long x 8,000 wide x 2,430 or 3,030 high
Air handling plant performance (m³/h)	20,000
Extract and input high efficiency fan motors (kW)	5.5
Direct gas fired burner output (kW)	170
Spray cycle air temperature rise	25°C
Bake cycle air temperature (maximum)	100°C
Lighting – high frequency and energy efficient	1,000 lux
Faster process options	QADs auxiliary air movement
Energy saving options	Fuel Saver Mode, QADs, Variable Airflow
Warranty	3 year warranty package (standard terms apply)



# EVAC and LEVAC Spraybooth Floor Options

EVAC and LEVAC floor designs are unique to Junair and have been developed to suit the specific needs of the paint spraying process.

The EVAC floor is designed to finish flush with the building's floor level; a recess in the building slab of 500mm is required for construction.

The LEVAC is a surface mounted design, requiring no builders-work excavation. Height from building floor to spraybooth floor is only 140mm and only a small, unobtrusive ramp is required to access the cabin. This makes it easy to load and unload vehicles, removing the excavation element significantly reduces installation costs and removes the disruption associated with excavation allowing a quicker installation.

## Features



FULLY GRIDDED AND FULLY BALANCED FLOOR



LEVAC FLOOR - EASY FILTER CHANGING

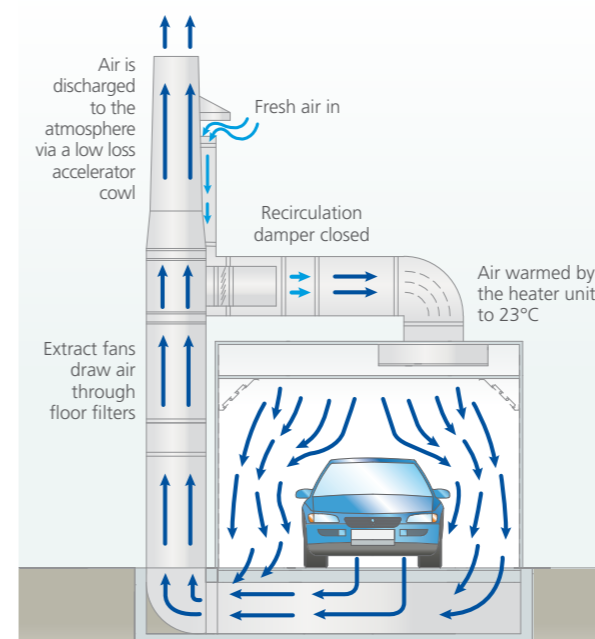


LEVAC LOW PROFILE RAISED BASE ONLY 140MM

### FEATURES AND BENEFITS OF EVAC AND LEVAC INCLUDE:

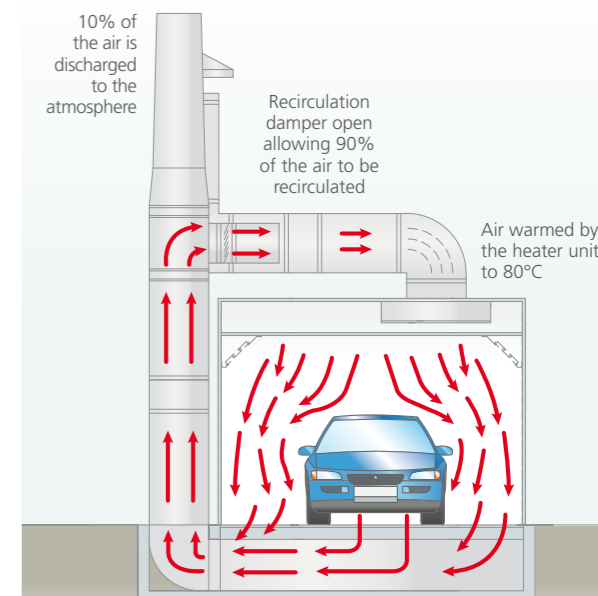
- A fully extracted and balanced floor provides better air movement when painting off-car panels and a vehicle together, preventing contamination from overspray and speeding up the curing process.
- Mist clearance times are reduced creating a safer environment for the operator.
- No excavation is required for the LEVAC floor which saves money and work disruption.

### Airflow on spray cycle



On spray cycle the recirculation damper is closed allowing only fresh air to enter the heating and filtration system.

### Airflow on bake cycle

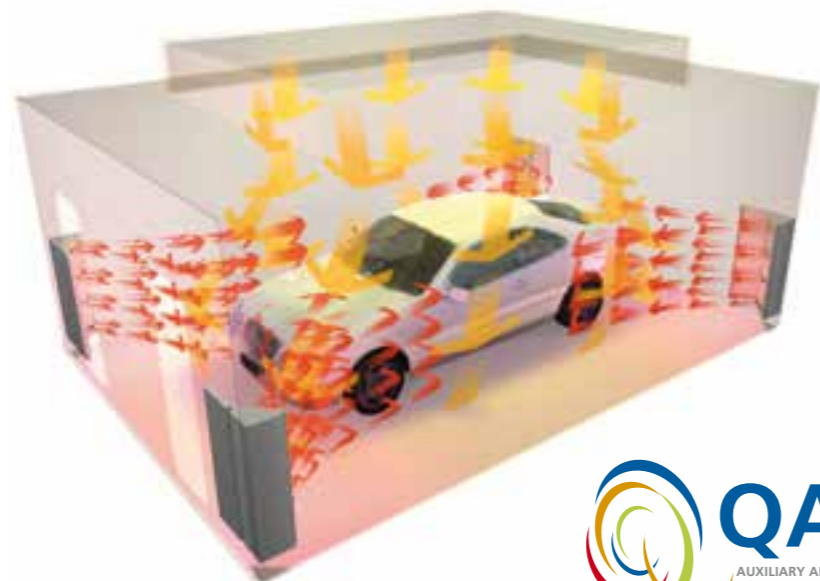


On bake cycle the recirculation damper is open. 90% of the air is returned to the heating and filtration system. 10% is discharged to the atmosphere. The damper on the air intake system reduces the amount of fresh air drawn in.



# Energy Saving Technology

## JUNAIR QADs AUXILIARY AIR MOVEMENT SYSTEM



**35%  
Faster**  
Process Times

**Saves up to  
40%**  
Energy Costs



QADs TOWER



CV QADs



STATIC NEUTRALISATION

Save time, energy and money on paint drying and curing. Process more vehicles and generate more revenue.

QADs is an advanced auxiliary air movement system that supplies airflow from the corners of the cabin. Developed and patented by Junair, the system is designed for use with coatings that comply with current legislation. The system is also available for retro fit installation into any make of spraybooth oven.

### QADs SN (Static Neutralisation)

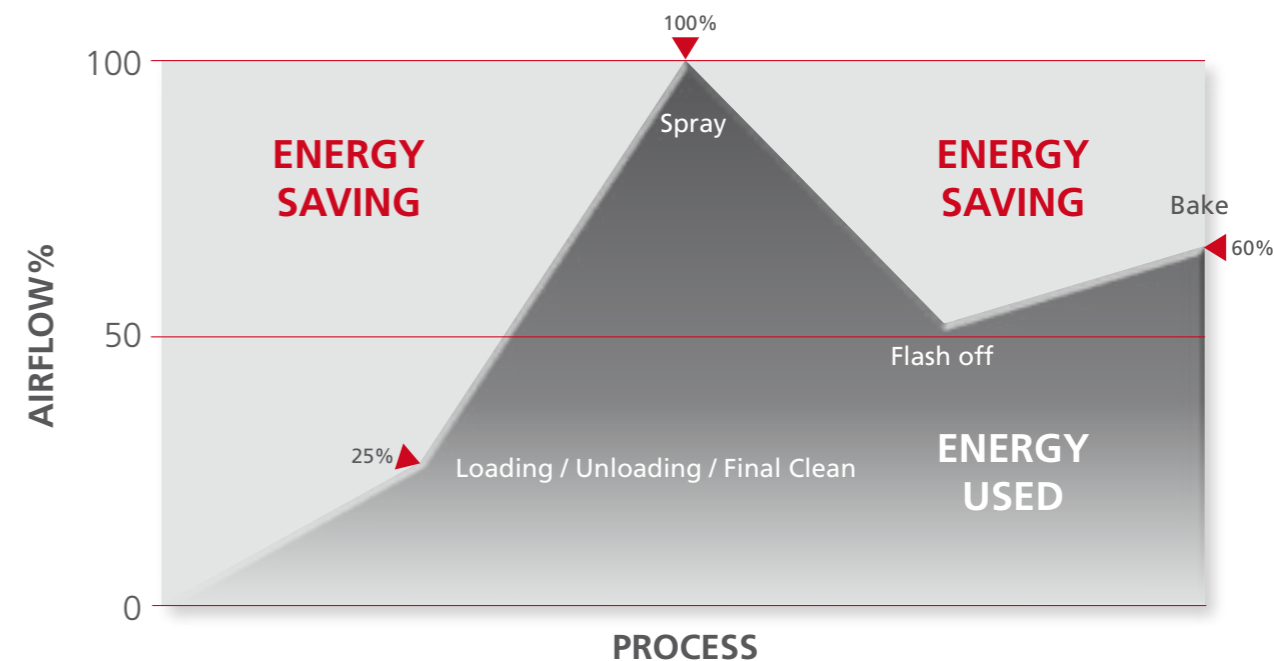
The SN System is an addition to our QADs auxiliary air movement system, designed to reduce the static charge produced during the finishing process. The static neutralisation system operates during cleaning, flash off and curing cycles. Reducing the static charge on the item to be painted improves cleanliness and reduces metallic distortion which aids colour matching.

### FEATURES & BENEFITS OF QADs INCLUDE:

- Saves up to 40% of energy cost
- Faster flash off for waterborne base-coats
- Faster, through curing of low VOC top coats
- Overall paint process is around 35% faster using QADs
- Automatic in operation and therefore deliver consistently superb results
- Clean in operation, air is filtered to just 10 microns
- QADs can ease the common Bodyshop bottleneck – the spraybooth
- Reduces the need for fast activators – less stock holding
- Cover the whole vehicle in one operation
- Adjustable nozzles for painting panels off the vehicle

## VARIABLE AIRFLOW TECHNOLOGY

A substantial increase in energy costs has forced Bodyshops to look closely at whole life operating costs. Spraybooth energy costs can vary from a massive £15 per job to as little £2 per job, all depending on the type of air handling plant installed. Junair have developed an energy efficient air handling plant that will deliver the lowest possible energy cost per job on a like for like basis.



The use of variable speed drives on spraybooth fan motors is nothing new, however Junair have developed a unique system that varies the airflow volume to suit the process.

The system is fully automatic, requiring no operator selection so the energy savings are guaranteed.

Reducing the airflow through the cabin means lower fuel and electricity costs. You don't need 100% airflow when the booth is standing idle for instance or when vehicles are being loaded and unloaded. That would be like sitting in your car at traffic lights with your foot hard on the accelerator.

**Saves up to  
65%**  
Energy Costs

**Load, unload, cleaning, idle**  
= Low airflow, reduced by 75%

**Flash off base-coat**  
= Medium airflow, reduced by 50%

**Spray application**  
= High airflow, 100% air volume used on spray cycle

**Bake Cycle**  
= Medium airflow, reduced by 40%

**When combined with QADs, Variable Airflow can save 65% of Spraybooth Energy Costs**



## FUEL SAVER MODE (FS)



Further energy savings are delivered when Fuel Saver Mode is added to the spraybooth air handling plant.

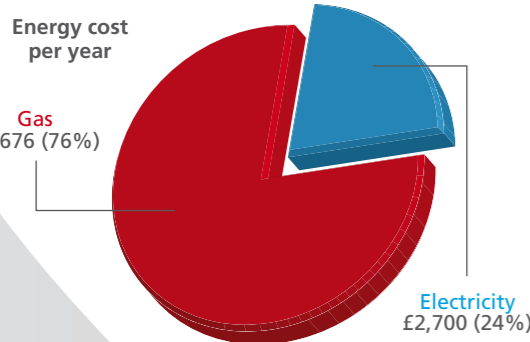
Most of the energy used by a spraybooth goes on heating up the external air to meet the required condition inside the cabin, normally 22°C for spraying.

FS Mode automatically changes the air handling plant to recirculation during idle and flash off modes. The system requires no operator input and therefore the savings are guaranteed. Safety interlocks ensure that the system is safe to operate.

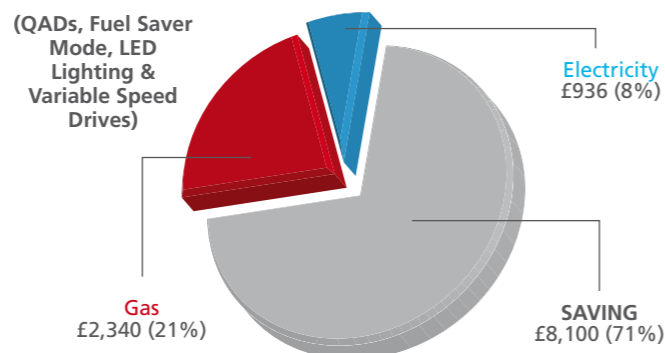
QADs, VSDs, LED lighting and FS Mode combined, can save over 70% of a spraybooths energy cost.

FS Mode as a single item installed will reduce energy costs by approximately 22%.

### Spraybooth WITH NO Technology



### Spraybooth WITH Junair Technology



#### Example of savings over 5 year period

Figures based on; airflow volume 25,000m<sup>3</sup>/h; motor combined load 15kW; average external air temperature 12.4°C; cost of natural gas including climate levy £0.032 per kW-h; cost of electricity including climate levy £0.095 per kW-h; completing 25 jobs a week.

**That's a saving of £40,500 over a 5 year period**

## Spraybooth Optional Equipment

The following items are available as options on all Junair spraybooth ovens

### MIST CLEARANCE INDICATOR

This automatic system indicates when it is unsafe to enter the spraybooth because harmful overspray is likely to be present in the cabin. Large red LED light arrays are positioned adjacent to each personnel door to clearly identify the safe and un-safe condition.



### SIDE LOADING SYSTEM

Some Bodyshop designs work well with side loading systems where a vehicle is placed on skates and rails for ease of movement. Junair manufacture light weight aluminium skates and use ball bearing wheels for ease of vehicle movement. Rail systems can be flush or surface mounted.



### FIRE ALARM STROBE

A red fire alarm strobe light is integrated into the spraybooth lighting frame inside the spraybooth cabin, with connections available for clients specialist fire alarm contractor to connect to.



### EMERGENCY LIGHTING

Non maintained, battery back-up lights installed adjacent to each personnel door inside the spraybooth cabin. The lights will operate for 30 minutes when power is removed from the lighting system during normal operation.



### MODE INDICATOR LIGHTS

The mode indicator provides operators and managers with information about the spraybooth operating mode at a glance. Forward planning of vehicle movements will reduce spraybooth non-productive time and improve workflow. Different coloured lights indicate:



**Idle, Spray, Flash Off, Bake, Job Complete**

### SLIDING AND CORNER DOOR ACCESS

Where vehicle access to the spraybooth is tight, a corner door option can make a Bodyshop more efficient and even create more useable working space. Single or twin sliding corner doors open up the spraybooth front / side to create easy loading and unloading of vehicles.





### COMPRESSED AIR FILTER REGULATOR

Three stage compressed air filter regulators are used to provide the best quality of compressed air for spraying and breathing.

- Stage 1** Liquid centrifuge and porous bronze filter removes particles to 5µm
- Stage 2** Coalescer removes the smallest amounts of liquids and solids down to 0.01µm
- Stage 3** Activated carbon removes oil mist carry-over to 0.003 ppm



### RECESSED CABINET FOR FILTER REGULATOR

White steel cabinet with hinged door to house the filter regulator is recessed into the spraybooth wall. Enclosing the filter regulator helps to keep it clean and free from overspray contamination.

### SPRAYBOOTH LED LIGHTING

Quality of light within the spraybooth is one of the most important features to consider when choosing between suppliers. Traditionally spraybooths use standard fluorescent light sources, these have a tendency to deteriorate in colour and brightness as the tubes age.

Junair has been at the forefront of lighting improvements to spraybooths for a number of years, and now we have the latest innovation for spraybooth lighting with LED. Junair have been developing for over two years a specific LED light unit for use in spraybooths which creates a bright, clean light that replicates natural daylight. The LED lighting can be installed in new spraybooths or retrofitted to existing facilities.



- 60% saving in operating costs
- Increase in LUX levels
- 5 year guarantee
- Crisp and clear illumination
- Flicker free lighting
- 10-20 Year life span
- Sustained uniformity of light and colour

Financial Saving Per Year <b>£997</b>	Environmental Saving Per Year <b>2258</b> KgCO <sub>2</sub>	Payback (Return on investment) <b>18</b> months
---	--	--

### VIEWING WINDOWS

Large and medium size windows can be specified for spraybooths, paint mixing rooms and partition walls. Windows can improve the working environment and enhance the appearance of the equipment installed.



### SPRAYBOOTH VEHICLE LIFT

Hydraulic or pneumatic vehicle lifts can be supplied as part of the spraybooth floor construction. Fully recessed to fit flush with the floor grids, the lifting capacity is 2.5 tonnes and the height of lift is 930mm.



### EXTERNAL SPRAYBOOTH OVENS

Junair manufacture and install spraybooth ovens suitable for external applications. Roof options include pitched roof with steel profile sheeting and high level side cladding or a flat roof with one piece rubberised coating. Both types of construction have a ten year warranty as standard. Walls and roof can be finished in a range of colours to suit existing structures.





## Spraybooth Rapid Repair Option



Any of our spraybooth oven models can be easily adapted to create a fully equipped rapid repair booth by adding cabinets, storage and integrated services.

The Rapid Repair option is a valuable addition to any Bodyshop as it allows small repairs to be completed without moving the vehicle. The facility is suitable for preparation, priming and top coating.



LARGE STORAGE AREA

Eliminating vehicle movements improves efficiency and shortens vehicle turn round time.

This option is available as a single or double bay cabin and as a heated or unheated unit. Infra-red or conventional warm air curing can be specified.

The rear of the spraybooth is fitted with cupboards that can store the materials and equipment required to complete small repairs including a masking dispenser.

Mechanical and electrical services are integrated into the cabin including compressed air, dust extraction, 3ph electrical socket, 240V electrical socket and a low voltage socket.

## Spraybooth Control Panel Options



Each Junair spraybooth model has the option of conventional control panel or PLC and colour touch screen technology which we call **i System 2**.

**i System 2** has significant benefits for the owner and the operator. Pre programmed bake cycles ensure that jobs are not under or over cured, saving time, energy and delivering consistently superb results. Operators select from a list of coatings shown on the touch screen and the PLC automatically runs the most efficient cure profile to suit the product.

**i System 2** automatically balances the air pressure within the cabin with no operator input, ensuring that the airflow is maintained at the optimum level.

### REMOTE DIAGNOSTIC UPGRADE

The PLC and touch screen have in-built web server functions that have been used to develop a remote diagnostic system. In the event of a fault occurring Junair engineers can interrogate the control system on-line to diagnose the problem quickly and efficiently. Settings can be changed without an engineer needing to visit site.



STANDARD CONTROL PANEL



# Aluminium and Non-Steel Repair Bay

Junair manufacture a range of aluminium repair bays that are constructed to match the spraybooth cabins and share many of the shell components including lights and doors. Specifications are tailored to suit Motor Manufacturer requirements including: BMW, Jaguar Landrover, Mercedes Benz, Porsche and VAG. Mechanical background ventilation is fitted as standard.

Available options include welding fume extraction, electrical sockets, dust extraction, storage cupboards and a work bench.



# Paint Mixing and Gun Cleaning Rooms

Paint mixing and gun cleaning rooms are available in a range of sizes and specifications. The construction uses a robust double skin panel, finished in white to match our spraybooths. We can supply economy alternatives which are constructed using single skin steel wall panels. Non standard sizes can be manufactured to suit a specific area.

Effective cross flow ventilation is provided from floor and bench level and connections for gun cleaners can be incorporated into the ventilation system. Air input is filtered to keep the mixing room free from contamination and a slam shut fire damper is fitted as standard to meet HSE requirements.

Standard internal finish is in white however customers can specify half height or full height brushed stainless steel finish.



## MIXING BENCHES

Stainless steel mixing benches are manufactured to order. Dimensions can be tailored to suit the space available. Options include rear splash back, high level cupboards and low level cupboards.



## HEATER

### Paint Mixing Room

ATEX approved "EX" rated 3 kW electric heater with thermostat control used to protect paint products from damage during cold conditions. Normally set to stop the mixing room air temperature dropping below 10°C.



## GRIDDED FLOOR

### Paint Mixing Room

Galvanised grids set in steel trays to provide an anti slip floor which will contain any spillages and help maintain a clean environment. Solid inverted trays are used under immovable equipment allowing grids to be lifted for maintenance purposes.



## VENTILATED MIXING BENCH

The most efficient way to ventilate a paint mixing room is to capture fumes at source. The stainless steel bench is connected to the paint mixing room ventilation system and provides mixing operatives with the most efficient fume control system.

### Bench dimensions

1,250mm (L) x 560mm (D) x 900mm (H)



## STAINLESS STEEL LINING

### Paint Mixing Room

For easier cleaning the internal walls of paint mixing and gun cleaning rooms can be lined in stainless steel.



## GUN CLEANERS

Junair supply and install gun cleaners sourced from high quality manufacturers including Redashe and UNIC. Fully automatic and manual options can be specified for water and solvent cleaning machines. Junair only supply equipment that has national service and spares support.





# Smart, Cosmetic and Rapid Repair Equipment



## SMARTCABIN

SmartCabin is ideal for primer application and to carry out small cosmetic vehicle repairs. It is also an ideal area to paint wheels. The SmartCabin is half the size of a normal spraybooth and is very economical to run.



### Key features

- Prime large areas in one operation
- Eases the pressure on main spraybooth ovens
- Increases paint finishing throughput
- Takes up minimal floor space and has easy vehicle access
- Paint up to 4 wheels at a time
- Glazed doors provide excellent visibility
- Superb lighting
- Economical to run
- Excellent air movement ensures effective overspray removal
- Meets HSE and Environmental Legislation
- Installed and operational within 48 hours

## SLIM LINE INFRA-RED CURING UNIT

3 kW single phase infra-red curing unit designed for use within the SmartCabin for curing primer and top-coats. The slim line design makes the unit easy to manoeuvre and position. The electronic control system has an automatic distance sensor, panel temperature control, ramp-up time and cure time. The lamps are also secured to the stand using robust fixings.



## SMARTAIR

Junair's SmartAir is a mobile painting system that is ideal for priming small areas within the workshop. Repairs can be primed quickly without the need for vehicle movement or full masking.

- Ideal for priming in the workshop
- Frees up the spraybooth for higher value jobs
- Occupies minimal floor space and is quick to install
- Cuts down time moving and masking vehicles
- Complies with Environmental and HSE legislation
- Designed to work with compliant coatings



## SMARTAIR IR

Dedicated infra-red unit designed to fit on the SmartAir hood stand for fast curing of painted areas. The IR control system is specifically designed for use on repaired areas having ramp-up time and panel temperature settings.







# Alloy Wheel Repair Equipment

## WHEELCABIN

Junair's WheelCabin is available as a heated or un-heated unit, it is ideal for wheel repairs, off-car panels and bumpers. Its compact size makes it easy to fit into most building layouts.

### Key features

- Filtered air intake keeps out workshop contamination
- Takes up minimal floor space
- Superb lighting
- Paint up to 4 wheels at a time
- Glazed doors provide superb visibility
- Economical to run
- Excellent air movement ensures effective overspray removal
- Meets HSE and Environmental Legislation
- Installed and operational within 48 hours



## WHEELBLAST

Junair manufacture and supply a range of high quality, durable and reliable wheel blast machines. We offer suction fed, pressure fed and water-blast machines.

Junair's WheelBlast is the first blasting unit specifically designed for the preparation of wheels prior to painting. Hand preparation that can take an hour to complete is completed in just a few minutes with WheelBlast.

- Totally enclosed wheel blasting system
- Prepares wheels ready for painting
- Safe and easy to use
- Superb lighting
- Dust capture ventilation system
- Easy load door arrangement
- Turntable provides the ideal component position



## AQUABLAST

Designed to simultaneously degrease and blast all sizes of wheels up to 22" including the tyre. The abrasive grit is suspended in water to create a slurry which minimises the dust generation associated with dry grit blasting. Compressed air is added at the blast nozzle to accelerate the slurry and water and provide a soft finish cleaning effect.



- Dust free process
- Vapour blasting cleans by flow of water
- Cleans the rear of the wheel – reducing contamination in the painting process
- Longer media life
- Extremely quiet in operation
- Stainless steel construction
- Rubber lining
- Tungsten Carbide nozzle

## VENTILATED PARTS PREPARATION BENCH

Ideal for the preparation of wheels and parts prior to painting. The ventilation and filtration system captures the dust particles at source and reduces contamination of the working environment.

- Extraction reduces workshop contamination
- Ventilation system works as a control measure for COSHH
- High efficiency cartridge filters
- Ideal height for working comfortably
- Requires only a standard 13A plug socket
- Strong steel construction
- Optional rollers for easy product handling



CHOICE OF TWO SIZES

## LOADING BENCH

Steel bench with easy glide rollers for effortless handling of wheels between process areas. Benches are manufactured to suit the equipment layout.



## TYRE CHANGER AND BEAD BREAKER

A low cost solution for wheel repairs where tyres need to be taken off the rim or removed from the wheel completely.



## WHEELWASHER

This WheelWasher is a computer controlled fully automatic system blasting a pressurised mixture of water and granulate onto the rotating wheel.

### Closed Water System

The Wheelwasher operates as a self-contained system and can be installed anywhere in the Bodyshop. The machine does not require a water supply or a drainage system and there is no need to remove the tyres from the wheel.

- Easy to install and operate
- User friendly display
- Energy saving
- Anti-vibration rubber feet



### WHEELBAKE

A purpose built convection oven for curing top coats on painted wheels.

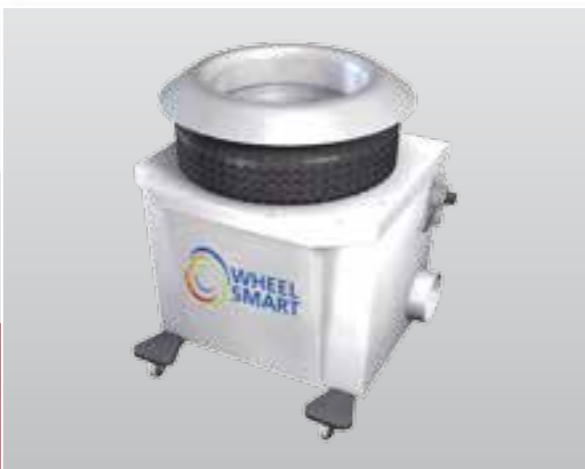
- Cures 2 wheels at a time
- Curing time 15 to 30 minutes depending on material used
- Clean in operation
- Designed for use with compliant coatings
- Suitable for wheels with or without tyre fitted
- Easy load roller system
- Automatic temperature and time control
- Electric heating – no gas required



### WHEELSMART

WheelSmart uses the extraction system from the Junair SmartAir unit and creates a mobile wheel painting facility in the workshop that meets HSE and Environmental legislation.

- No spraybooth time required to paint wheels
- Quick and easy to use
- Caters for all car wheel sizes



### WHEELRACK

Junair's WheelRack provides the ideal work bench for preparing alloy wheels. The mobile bench can be easily moved around the workshop.

- Takes two wheels at a time
- Ideal height and angle for working comfortably
- Lightweight and mobile
- Wheels rotate easily on removable rollers
- Adjusts for any car wheel size in common use
- Robust and compact design



### SMARTSTATION

A compact solution for paint storage, paint mixing and gun cleaning.

- Stainless steel mixing bench
- Water and solvent cleaning
- Waste drum has "Full" indicator
- Lockable storage compartment
- Fully ventilated to contain fumes
- Steel construction with white durable paint finish



## Mechanical And Electrical Services

Junair have developed a Mechanical and Electrical Services package to simplify the installation process for customers. Junair design the M&E system to suit equipment requirements, co-ordinate the installation with the rest of the project activities and make sure that there are no omissions from the specification and no clashes with other services on site.

### COMPRESSED AIR

Compressed air systems can be installed using conventional galvanised steel pipe-work, or our preferred option, an advanced high efficiency aluminium system which has many benefits, including:

- Total absence of corrosion allowing constant clean compressed air
- Free flow system has a low friction loss which saves energy
- Quick to install
- Easily modified or relocated



### SERVICES TRAY

Junair's high level services tray is a cost effective, flexible and attractive way of installing mechanical and electrical services within the Bodyshop. The tray section is manufactured from white pre coated galvanised steel. This is suspended at high level and carries compressed air, dust extraction and electrical wiring.



### BUILDERS WORK

Junair offer a comprehensive building services solution including:

- Construction of spraybooth extraction pits
- External spraybooth bases
- Wall openings / roller shutter door installation
- Erection of new steel buildings such as valeting and storage areas
- Cutting and sealing roof / wall holes for spraybooth ductwork



### NATURAL GAS AND LPG DISTRIBUTION PIPE-WORK

Junair engineers installing new or working on existing gas distribution pipe-work have Gas Safe training and certification. Natural gas or propane installations are carried out to strict working standards and are fully tested and certified on completion.



### ELECTRICAL INSTALLATION

From local connections to full building installations, Junair design and install electrical distribution systems to provide clients with a complete project package. Junair take the responsibility of providing the correct power distribution to each item of equipment. Electrical installations are tested and certified on completion.





## BODYSHOP LIGHTING

Junair have developed and produced the first lighting system specifically designed to meet the needs of the Bodyshop industry. This new and innovative lighting product combines outstanding performance with flexibility and money-saving energy efficiency.

- Excellent colour rendition
- Uniform lighting across the working area, no harsh spot lighting
- Cost effective to install and maintain
- Easily modified, extended or relocated
- Modern, attractive continuous reflector design

Junair's standard lighting system is extremely energy efficient in comparison to older lighting systems. The energy efficient add on package will dramatically reduce energy costs even further.

### LED Bodyshop Lighting Upgrade

- 60% saving in operating costs
- Increase in LUX levels
- 5 year guarantee
- Crisp and clear illumination
- Flicker free lighting
- 10-20 Year life span
- Sustained uniformity of light and colour



Purpose built vacuum for aluminium repair, suitable for all makes of tools including Festool. Built with a robust construction.



## DUST EXTRACTION SYSTEMS

Tailored to suit the client's requirements, engineered and installed to exacting standards. Junair's dust extraction systems deliver the performance and quality required by progressive refinishers.

The TD range of turbine vacuums are compact in design, extremely powerful and quiet in operation. Maintenance costs are low and automatic filter cleaning is fitted as standard. Auto start / stop controls are included on each turbine vacuum model.

Extraction point options include simple Y pipes or integrated energy modules complete with a choice of electrical sockets and regulated compressed air.

- Designed for use with any make of extraction tool, including Festool
- Powerful suction with turbine technology
- Auto start / stop and filter cleaning
- Low noise level
- Low maintenance cost
- Auto shut off available as an optional extra

## COMPRESSORS

Junair specialise in HPC compressor packages. The equipment is of the highest quality and is extremely reliable in use.

### Features include:

- Excellent service and spares back up
- Integral dryers reduce floor space required
- Variable speed drive technology can reduce running costs by 35%
- Quiet in operation



## PARTITIONING

Junair design and install insulated steel partitioning incorporating windows, doors, ventilation and lighting to create office, storage areas and clean rooms. The partitioning is quick to install and can be easily modified.



## HEATING

Heating systems are designed and installed to suit the building layout and work process. Radiant tube heating is favoured for Bodyshops because it is economical to run and meets COSHH regulations. Other systems include warm air heating where radiant tubes are not practical and electric heating for small areas with no gas available.



## FLOOR PAINTING

High quality 2 pack epoxy floor coating available in a choice of colours with bay marking in white. Floor preparation is included in the process and a water vapour barrier is used where humidity levels are high such as new concrete.

A high quality floor finish makes a huge difference to the appearance of the Bodyshop.





### VEHICLE LIFTS

Junair supply and install a variety of vehicle lifts, these include:

- Above ground 2 post base-less lift
- In ground space saving lift 3.5 tonne
- High rise scissor lift (1800mm) 3.0 tonne to 5.0 tonne
- Short rise scissor lift 3.0 tonne (930mm)
- 4 post wheel alignment lift

Junair only supply lifts from quality manufacturers such as Autop, Werther and Ravaglioli, all lifts have a loading certificate and meet CE regulations. Spare parts are available ex stock.



### STATE-OF-THE-ART JIGS AND WHEEL ALIGNMENT SYSTEMS

Junair have supply agreements with most of the leading jig manufacturers and we can incorporate any customer specified product into our Bodyshop design and project managed installation. Jig manufacturers include:

- Blackhawk for Korek & Quick pull systems
- Caroliner
- Celette



Junair also supply and install wheel alignment systems, manufacturers include:

- Ravaglioli
- John Bean

Lifts with wheel free facility and slip plates can be supplied as 4 post or scissor design. Recessed or surface mounted options are available for both types.



## Spraybooth Service and Maintenance



AGM Services – part of the Junair Group – provide a complete service and support package for all makes of spraybooth ovens and ancillary equipment such as preparation areas, paint mixing rooms and dust extraction systems.

AGM have engineering centres based nationally to provide clients with economical maintenance and fast response to breakdown situations. Site staff are highly qualified electrical / mechanical engineers who have a wealth of experience. We have engineers service centres currently located in:

*South West, South East, London, East of England, East Midlands, West Midlands, North West, Yorkshire, North East and Scotland*



The quality of customer care is underlined by ISO9001:2008 accreditation and the quality of workmanship is reflected in a continually growing list of customers throughout the UK.



### PAS

All AGM customers receive calibration certificates for the spraybooth service suitable for PAS and other quality audit systems.

### SPRAYBOOTH LEGISLATION TESTING

AGM carry out specialist testing to ensure clients comply with Health & Safety and Environmental legislation. Testing includes:

- Breathing air quality testing for spraybooth compressed air supply
- Spraybooth mist clearance testing
- Local Exhaust Ventilation (LEV) testing for spraybooth, paint mixing room, dust extraction system, welding fume extraction, exhaust extraction



### SPRAYBOOTH FILTERS

AGM supply a comprehensive range of spraybooth filter media for immediate despatch. Manufactured from the finest most resilient materials to achieve the highest levels of efficiency.

- Input / ceiling filter
- Primary extract filter
- Secondary extract filter
- Pre filter
- Bag filters
- Next day delivery



**NEXT DAY DELIVERY**

### SPRAYBOOTH SPARE PARTS

As a group, Junair carry a huge range of spare parts for spraybooths and other Bodyshop equipment. Our manufacturing facility in Lancashire has a large storage facility dedicated to spares. Non stock items can normally be obtained within 24 hours and our large purchasing volume means that we can pass on discounts to customers.

### Contact details:

- @ sales@agm-services.co.uk
- 🌐 www.agm-services.co.uk
- 📞 01706 363585



**Junair Spraybooths Ltd** Southgate Industrial Park, Cross Street, Heywood, Lancashire OL10 1PW  
Tel: +44 (0) 1706 363555 Fax: +44 (0) 1706 363560 Email: [sales@junair.co.uk](mailto:sales@junair.co.uk) [www.junair.co.uk](http://www.junair.co.uk)